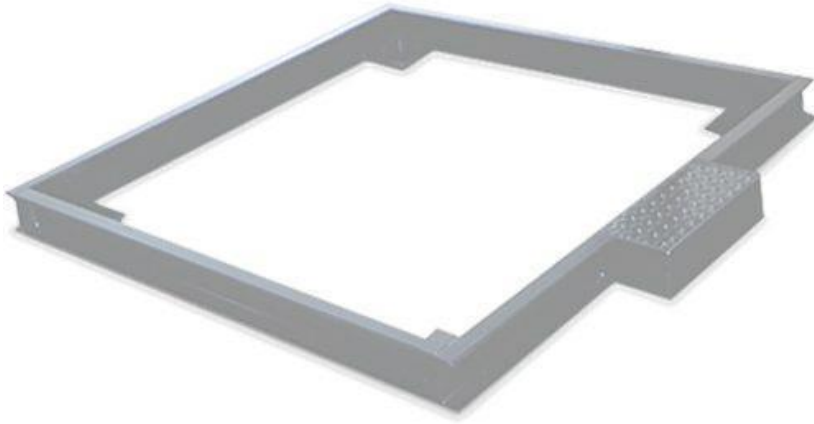


Rice Lake's RoughDeck® pit frames are used for pit installations of the RoughDeck floor scale. When you need a scale installed for low profile with the existing deck, a RoughDeck pit frame is available in a variety of sizes and surfaces, including RoughDeck's reputable hostile environment construction.



Manufacture: Rice Lake
SKU: 64771

Please Call
(800)832-0055

Features

Rice Lake's RoughDeck® pit frames are used for pit installations of the RoughDeck floor scale. When you need a scale installed for low profile with the existing deck, a RoughDeck pit frame is available in a variety of sizes and surfaces, including RoughDeck's reputable hostile environment construction.

- Use concrete of minimum yield strength 5,000 PSI or 6-bag mix.
- Allow 7 days to cure (wet concrete periodically during this time).
- Dimensions shown assume firm, stable soil conditions. When soil conditions are not adequate, place foundation at sufficient depth.
- In wet or washdown applications, we recommend the use of hermetically sealed load cells, and that the junction box be mounted remotely in a dry location.
- Wire mesh to have minimum 0.75 in cover bottom and sides.

i81u812

[Contact US](#)[718-336-5900](#)[Returns](#)[Store Policies](#)[About Us](#)

- Phone: [\(800\)832-0055](tel:(800)832-0055) or [\(718\)336-5900](tel:(718)336-5900)
- Chat with us via [WhatsApp Chat](#)

